



Developing Social Housing for Regional QLD

Regional Housing Limited

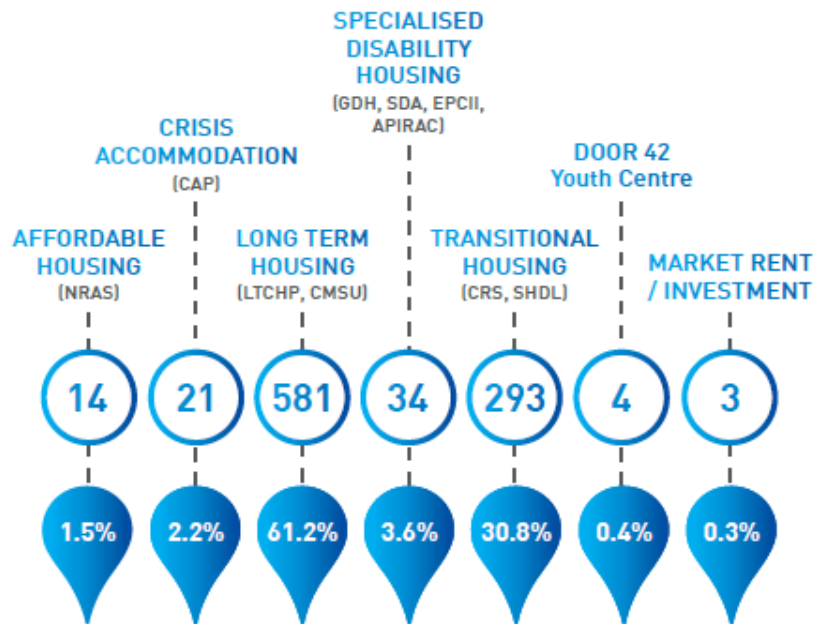
[Isaac Hunter](#) | Business Development Officer

SERVICES

- Crisis accommodation
- Transitional Housing
- Specialist Disability Accommodation
- Long Term Housing
- Affordable Housing
- Commonwealth Financial Counselling
- Emergency Relief
- Drought Relief
- Specialist Homelessness Services
- Mobile Support
- Door 42 Youth Centre
- Home Assist Secure



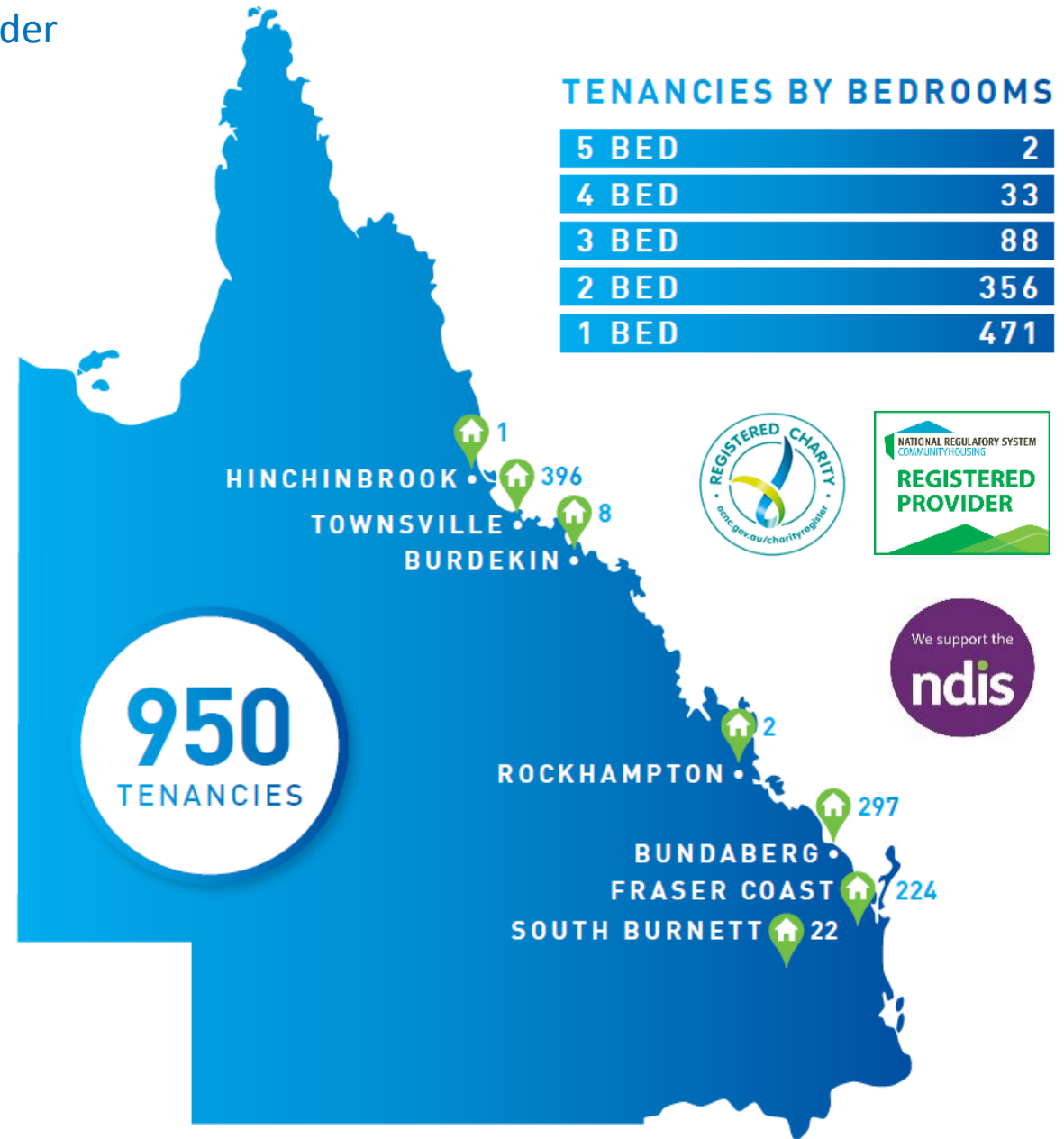
HOUSING TYPES



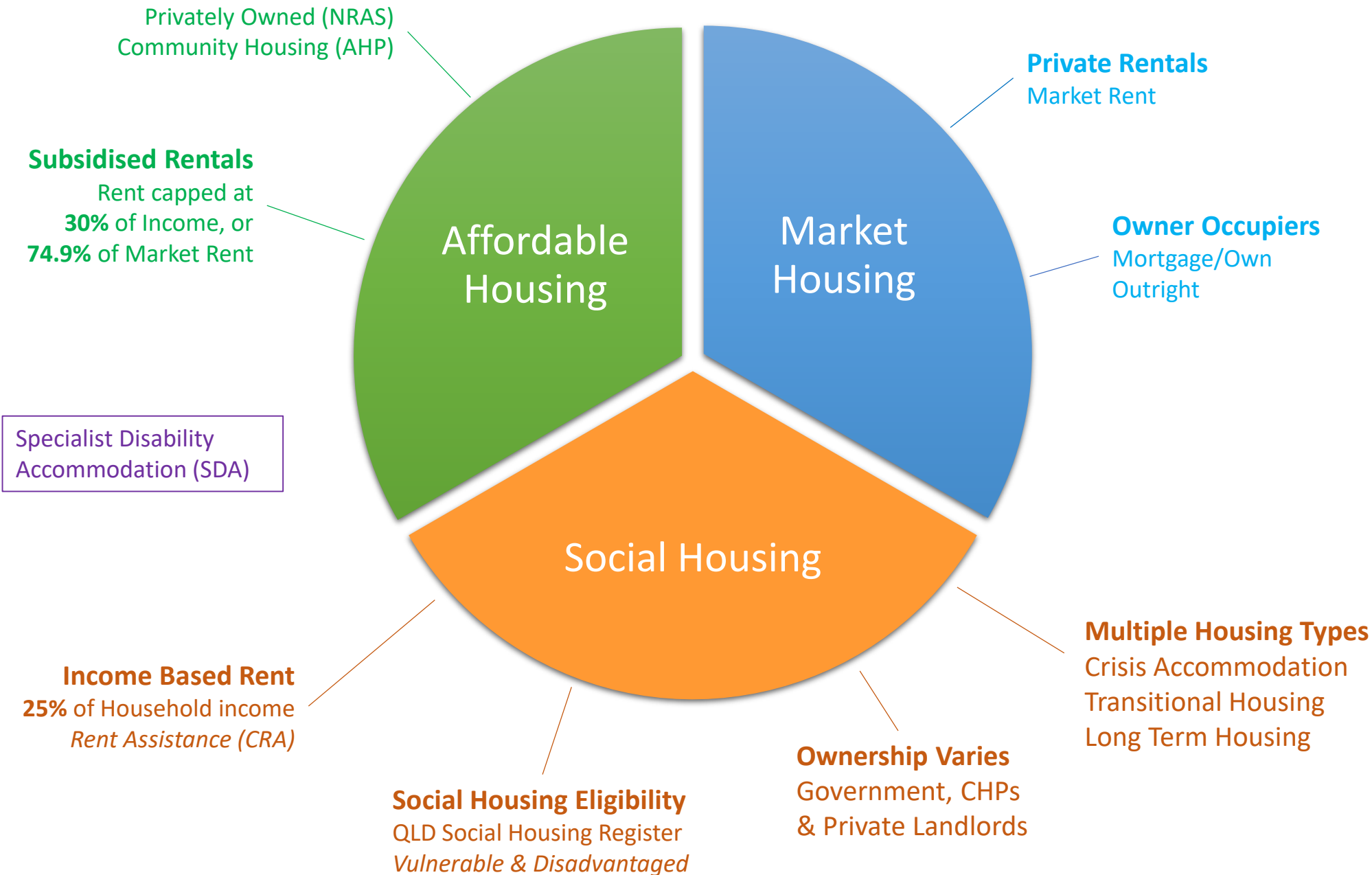
*Figures as at 30 June 2021

TENANCIES BY BEDROOMS

5 BED	2
4 BED	33
3 BED	88
2 BED	356
1 BED	471



The Housing Continuum



June 2022



2010 | 4 Units



2016 | 2 Units



2016 | 2 Units

Completed Projects



2016 | 2 Units (SDA)



2017 | 2 Units (SDA)



2021 | 16 Units (Social-Affordable)

Current Projects

2022 | 4 Units (Social-Affordable)

2022 | 16 Units (Social-Affordable)

RHL
Developments



June 2022

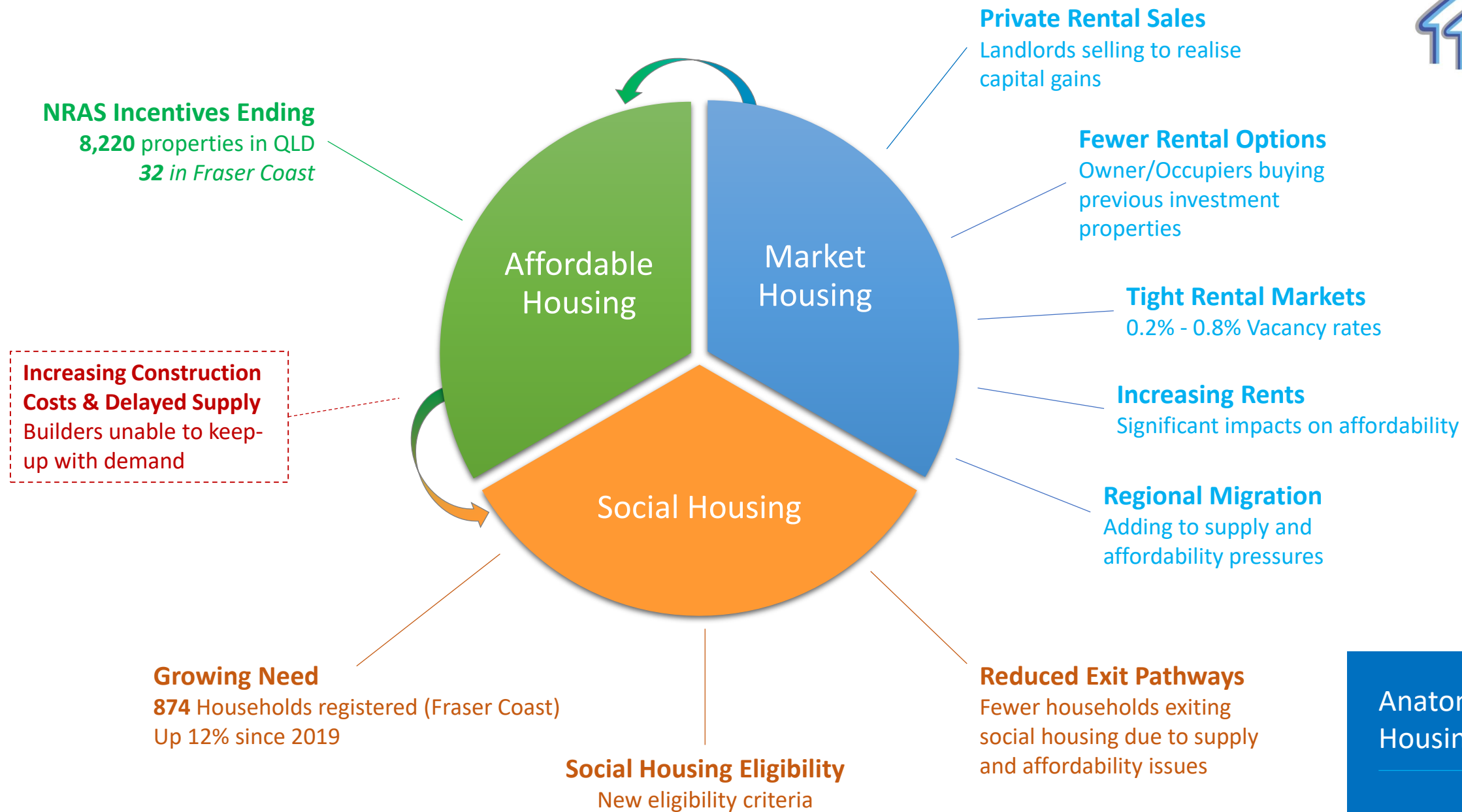


A place to call home



Key Challenges of Developing Social Housing







Help to Home
(H2H)

- ✓ Target housing outcomes for up to 1,000 households eligible for social housing
- ✓ \$40 million over two-years

6,365

total state-wide
commencements
over four years



QuickStarts Qld
(QSQ)

- ✓ Target 2,765 social housing dwellings
- ✓ \$1.593 billion capital investment
- ✓ Includes new developments, redevelopments of existing sites and strategic land purchases



Housing Investment Fund
(HIF)

- ✓ Target 3,600 social housing dwellings and additional affordable housing
- ✓ \$1 billion investment fund generating \$40 million each year

\$1.813 billion

Over 4 years capital investment through QHIGI will deliver new social housing and catalyse additional affordable homes for Queenslanders.

Questions?

“Every person has a home”



Business Development Team

June 2022

